



ITINERARY
12 DAYS/11 NIGHTS

DIVING CRUISE AND LAND
EXCURSIONS

**AQUA-
MUNDO**

AGENCE DE VOYAGE



WHY TRAVELLING WITH US

Before departure, Aqua-Mundo Travel will provide you with all the information necessary for the smooth running of your trip. Thanks to an in-depth knowledge of this destination, the team will be able to advise you in the preparation of your dream trip!

You can rest assured that the quality of the service providers has been validated and that you will enjoy the best quality at the best price! Aqua-Mundo works directly with local suppliers, which makes it possible to provide fair price, fair tours and eco-responsible.

Your safety is also at the heart of our concerns! Since diving conditions in Galápagos can be difficult at times, you will be accompanied by at least one English-speaking scuba diving guide and Galapagos naturalist guides, all experienced PADI professional divers, who will ensure your safety throughout your stay.

We are the benchmark in North America for trips to the Galapagos Islands!

Plongée Aqua-Mundo is a PADI 5* Dive Center located in Sherbrooke, Quebec, CA.

Aqua-Mundo Travel works in close collaboration with this dive center with which it shares its commercial premises.

Plongée Aqua-Mundo provided the experienced diving guides who know the destination very well.



GALÁPAGOS ISLANDS

The Galapagos Islands are an isolated archipelago comprising around 125 islands and volcanic islets stretching over nearly 225 km (from north to south). The archipelago is located about 1,000 km from the coast of Ecuador and has a population of over 25,000.

Known for its large shark population, including hammerhead sharks, Galapagos sharks, and white tip sharks, the nutrient-rich waters also attract manta rays, sea lions, eagle rays, dolphins, sharks whale and many more! Some sites are so rich in marine life that you won't even know where to look!

Even if the quality of the diving is incomparable, the diving conditions are very variable depending on the season. The water temperature generally varies between 13 and 22°C (56 and 72°F), but can reach up to 28°C (82°F), depending on the season and the year (for example during an El Niño year). The currents are changeable and can sometimes be very strong. Diving in the Galapagos is recommended for experienced divers.

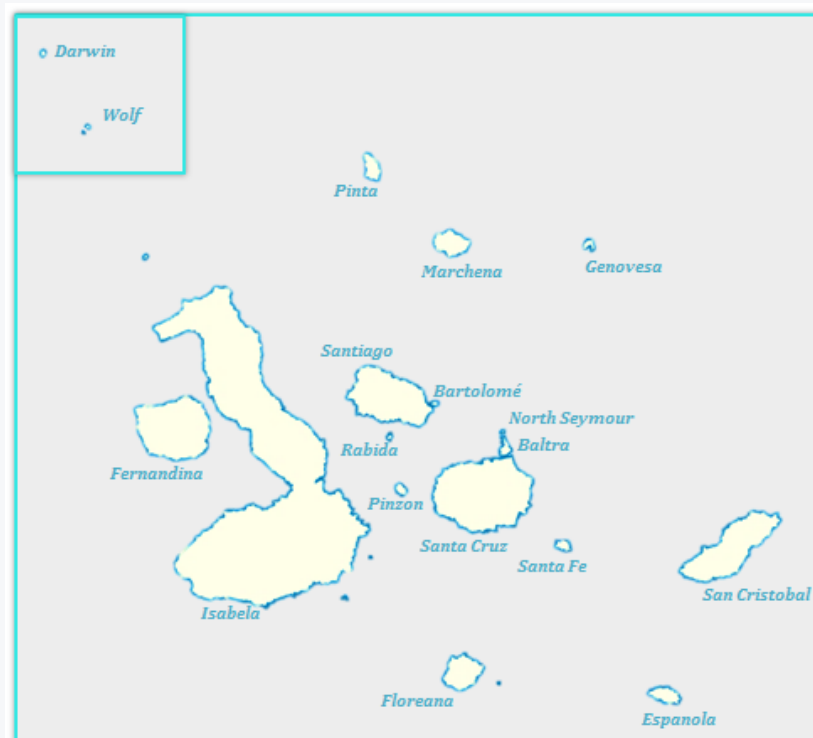
In addition to world-famous diving sites, the Galapagos Islands offer a multitude of land and water activities allowing you to discover this mysterious archipelago. The flora and fauna of the land are just as intriguing and unique as those seen underwater. You will be fascinated by the different species of giant tortoises, the marine iguanas basking in the sun and the sea lions occupying all the public benches of the city!

Whether underwater or on land, the Galapagos Islands will amaze you! Without a doubt, a trip of a lifetime!





GALÁPAGOS ISLANDS



Main islands

Population

Area

Espanola	0 inhab.	60 km ²
Fernandina	0 inhab.	642 km ²
Floreana	Approx. 170 inhab.	173 km ²
Isabela	Approx. 2200 inhab.	4670 km ²
San Cristobal	Approx. 6000 inhab.	557 km ²
Santa Cruz	Approx. 15000 inhab.	986 km ²
Santa Fe	0 inhab.	24 km ²
Santiago	0 inhab.	572 km ²

PACKAGE DESCRIPTION

The Galápagos archipelago is made up of islands whose fauna, flora and atmosphere are very different from each other. Therefore, a trip to the Galápagos would not be complete without visiting several of these islands. This package is specially designed to offer you the best diving in the archipelago, while giving you the opportunity to discover several islands and islets.

You will have the opportunity to dive the world famous sites and see all the landscapes appearing on the postcards.

This package can be adjusted at any time according to your needs. It is, for example, possible to extend your stay on the islands or on the Ecuadorian mainland. The Aqua-Mundo Travel team is at your service to make your stay meet your expectations!

Do not hesitate to let us know your preferences and your projects!

Voyage Aqua-Mundo only does business with local partners, which makes it possible to offer products at a fair price, equitable and eco-responsible.

If the dates of our group trips do not suit you, it is possible to book this package individually. Contact us for all the details.

You are not a fan of diving cruises? See our other group packages available.

THE NORTADA DESCRIPTION OF THE BOAT

The Nortada is a completely rebuilt fiberglass vessel serving as a Galapagos Islands dive cruise. The ship can accommodate 8 people in double occupancy or up to 12 people in triple occupancy. The boat is operated by a 100% Ecuadorian company and hires a 100% local crew.

The Nortada is not a luxury ship, but has nothing to envy to comparable mid-range ships accommodating 16 passengers. The small number of passengers gives you the advantage of taking advantage of encounters with marine wildlife and benefiting from increased supervision. This results in a safer and more personalized diving experience: a signature product not obtainable on any other boat.



ITINERARY

- Day 1** – Arrival at *San Cristóbal* airport* – Land transfert to *Puerto Baquerizo Moreno* – Free time
- Day 2** – Scuba diving** – *Isla San Cristóbal*
- Day 3** – Land excursions around the island** – *Isla San Cristóbal*
- Day 4** – Boat transfer to *Isla Santa Cruz* – Activities around *Puerto Ayora*
- Day 5** – Boarding the Diving cruise – Activities around *Puerto Ayora*
- Day 6** – Diving cruise – PUNTA CARRIÓN / BALTRA / COUSIN ROCK**
- Day 7** – Diving cruise – WOLF ISLAND**
- Day 8** – Diving cruise – DARWIN ISLAND **
- Day 9** – Diving cruise – WOLF ISLAND**
- Day 10** – Diving cruise – CAPE DOUGLAS / PUNTA VICENTE ROCA **
- Day 11** – Diving cruise – CAPE MARSHALL / ROCA BLANCA **
- Day 12** – Retour de la croisière – Flight back to Quito*

*We can help you book international / domestic flights to the Galápagos.

**Refer to this document for activities details.

The itinerary may vary slightly depending on Galápagos National Park regulations and requirements or on navigation and diving conditions at time of travel.

DAY 1 ISLA SAN CRISTÓBAL

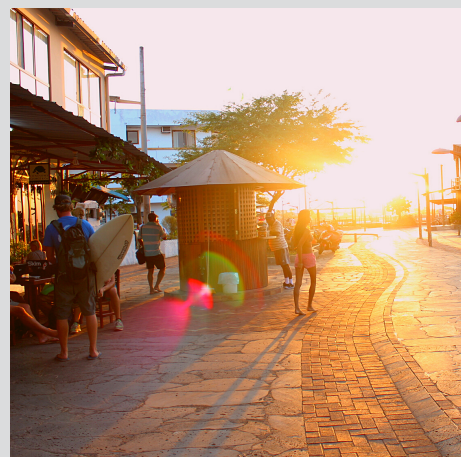
AM

- Arrival of travelers at *San Cristóbal* airport, on the Galápagos Islands.
- All visitors must pay Galapagos National Park fees upon arrival. Provide payment of 100 USD* in cash.
- After collecting your luggage, a private transport awaits you for the transfer to the hotel.

PM

- Late lunch in *Puerto Baquerizo Moreno* (not included).
- For interested travelers, an activity will be offered around *Puerto Baquerizo* to enjoy the rest of the day.
- If necessary, stop at the dive center to try on rental equipment.
- Dinner in a restaurant in *Puerto Bariquezo* (not included) during which you will get all the information about the activities in *San Cristóbal*.
- Night in 3-star accommodation - *Puerto Baquerizo*.

* Rate is subject to change without notice.



DAY 2

SCUBA DIVING - SAN CRISTÓBAL

AM

- Breakfast at the hotel and departure for the activity around 8:00.
A taxi transfer is provided to the port, if necessary.

- 2 dives at *Leon Dormido* ("Kicker rock").

Leon Dormido is a dive site located west of San Cristóbal. The rock takes its name from the fact that, from a certain angle, it looks like a sleeping lion. The site consists of 2 giant monoliths, which offer a wall dive where it is possible to observe large pelagics, schools of fish and sharks, sea turtles and many more!

- Lunch is served after the 2nd dive, just before resuming navigation to *Puerto Baquerizo*.

PM

- Stop on a beach on trip back (place to be determined depending on the places authorized by the National Park).
- Return to port at the end of the afternoon.
- Dinner in a restaurant in *Puerto Baquerizo* (not included).
- Night in 3-star accommodation – *Puerto Baquerizo*.



DAY 3

LAND EXCURSION - SAN CRISTÓBAL

During this day, you will have the opportunity to do short hikes, snorkeling in addition to having time to relax on magnificent beaches, while observing the local fauna and flora.

This day will give you a complete overview of *San Cristóbal* island.

- Breakfast serve at the hotel and departure for the activity.
- Lunch will be serve during the excursion (not included).
- The excursion includes the accompaniment of a private guide from the Galápagos National Park.
- Back to the hotel at the end of the afternoon.
- Dinner in a restaurant in *Puerto Baquerizo* (not included).
- Night in 3-star accommodation - Puerto Baquerizo.



DAY 4

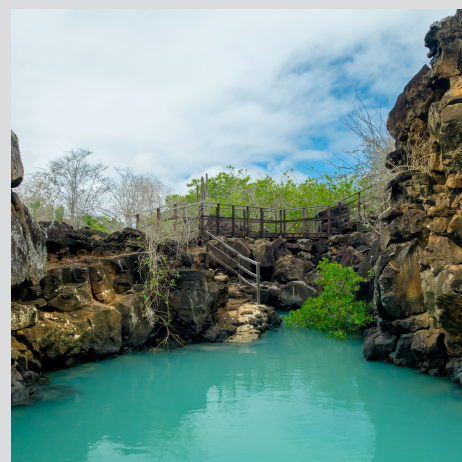
ISLA SAN CRISTÓBAL - ISLA SANTA CRUZ

AM

- Breakfast at hotel and early departure for *Puerto Baquerizo* port to take the ferry (speed boat) to *Isla Santa Cruz*.
- Arrival in mid-morning at *Puerto Ayora, Santa Cruz*.
- Transfer to the hotel and take possession of the rooms.
- Lunch in a restaurant in *Puerto Ayora* (not included).

PM

- Free time in the afternoon.
An activity will be proposed to you. You can choose whether to participate or not.
- Dinner in a restaurant in *Puerto Ayora* (not included) during which you will obtain all the information concerning activities on *Santa Cruz* and about the cruise.
- Night in 3-star accommodation – *Puerto Ayora*.



DAY 5

DEPARTURE FOR THE CRUISE - ISLA SANTA CRUZ

AM

- Breakfast at the hotel and departure to the diving cruise for luggage transfer.
- In the middle of the morning, departure for the excursion around *Puerto Ayora*.
- Lunch will be served on board the cruise.

PM

- Other activity around *Puerto Ayora*, according to the itineraries authorized by the National Park.
- Back on the boat at the end of the day for dinner.
- Night on board the cruise.

The boat will begin its navigation in the middle of the night towards the first dive site.



DAY 6

DIVING CRUISE - PUNTA CARRIÓN / BALTRA / COUSIN ROCK

Punta Carrión or *Baltra N/E* are considered warm-up dives during which dive procedures and equipment are tested. Depending on the conditions, encounters with whitetip sharks, Mola-Mola, seahorses and several types of reef fish are possible.

Cousin Rock is one of the most popular dive sites in the Central Islands. The islet is formed of volcanic tuff. Dive sites in the area are characterized by their eroded surfaces covered in soft corals and gorgonians. Highlights include nudibranchs, frogfish, seahorses, sea lions, eagle rays, and schools of fish.

- The day begins around 6:00 am with a morning dive performed at *Punta Carrión*, on the northeast part of *Baltra* or near *Seymour North*.
- The first dive is followed by lunch on board, while the boat refuels at the port of *Baltra*.
- After stopping at the port, the boat resumes navigation towards *Cousin Rock* (about 2 hours of navigation).
- One or two dives will be made on *Cousin Rock*, if possible, depending on the schedule.
- All meals are served on board.
- Night on board the cruise.

The boat will begin the long navigation as soon as possible towards the next dive site (*Wolf Island*).



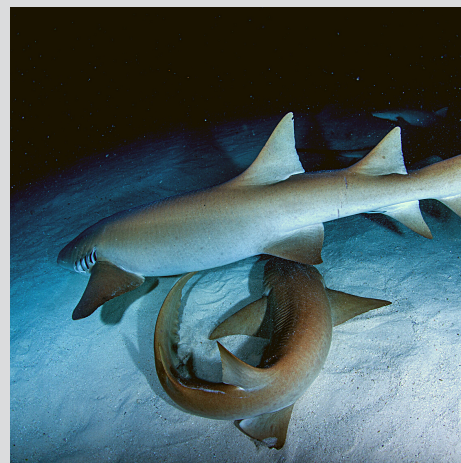
DAY 7

DIVING CRUISE - WOLF ISLAND

At this site, divers are usually able to swim alongside several species of sharks, dolphins, turtles, rays and schools of colorful fish. *Wolf* also offers the opportunity to explore caverns and underwater tunnels formed by erosion.

- All meals are served on board and are scheduled around the dives, usually one dive before breakfast, one after breakfast, etc.
- Up to 4 dives can be done during the day.
- This site also allows you to do a night dive, if the conditions allow it.
- Night on board the cruise.

The boat generally stays at the anchorage of the dive site overnight, before starting navigation early on next morning to the next dive site.



DAY 8

DIVING CRUISE - DARWIN ISLAND

Darwin is considered one of the best places to dive in the world. Divers can usually see several species of sharks, dolphins, turtles, eagle rays and schools of colorful fish. Schools of hammerhead sharks, whale sharks and tiger sharks are the highlights of dives in *Darwin*.

- All meals are served on board and are scheduled around the dives, usually one dive before breakfast, one after breakfast, etc.
- Up to 4 dives can be done during the day.
- The boat resumes navigation at the end of the day towards *Wolf* (about 2 hours).
- Night on board the cruise.

The boat generally stays at the anchorage around *Wolf* during the night.



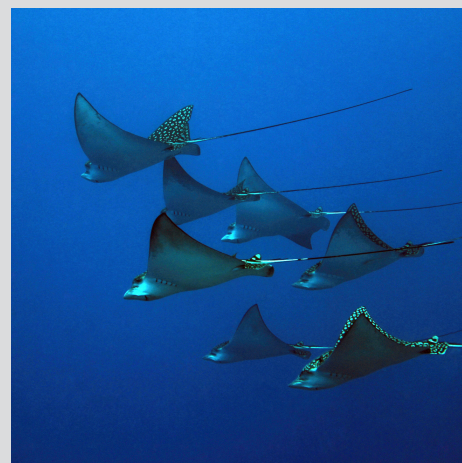
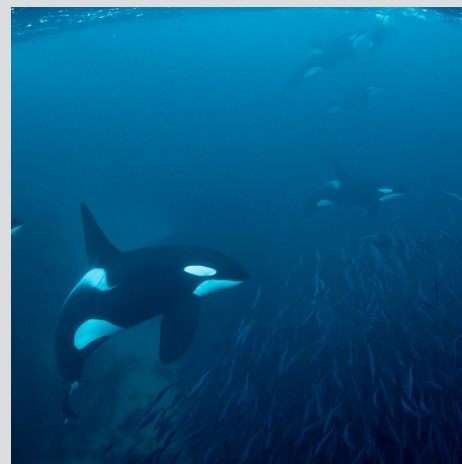
DAY 9

DIVING CRUISE - WOLF ISLAND

Return to the *Wolf* to enjoy its superb dive sites.

- All meals are served on board and are scheduled around the dives, usually one dive before breakfast, one after breakfast, etc.
- Up to 4 dives can be done during the day.
- This site also allows you to do a night dive, if the conditions allow it.
- Night on board the cruise.

The long navigation to the next dive site *Cap Douglas* resumes at the end of the day on about 100 nautical miles and can be difficult at times.



DAY 10

DIVING CRUISE - CAPE DOUGLAS / PUNTA VICENTE ROCA

The *Isabela* and *Fernandina* dive sites are where cormorants, Galápagos penguins, marine iguanas and several other endemic species can be consistently observed. The highlight of *Cape Douglas* are the marine iguanas that feed underwater. The *Cape Douglas* and *Punta Vicente Roca* sites also host red-lipped batfish, horned sharks, Mola-Mola as well as different types of whales in season.

- One or two dives can be done at *Cape Douglas*.
- A navigation of about 90 minutes is necessary to get to the next dive sites near *Punta Vicente Roca*, where one or two dives are carried out.
- Up to 4 dives can be done during the day.
- All meals are served on board and are scheduled around the dives, usually one dive before breakfast, one after breakfast, etc.
- Night on board the cruise.

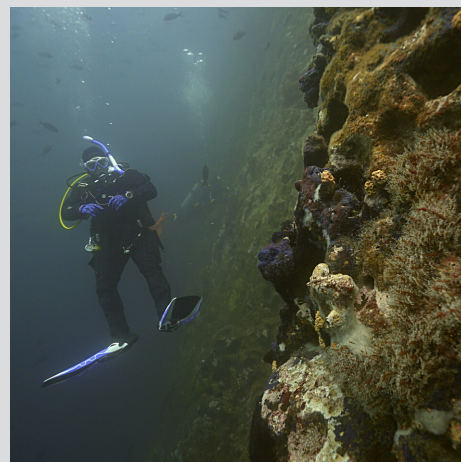


DAY 11

DIVING CRUISE - CAPE MARSHALL / ROCA BLANCA

Located on the northeast coast of Isabela, these volcanic walls are partially covered in black coral bushes. From January to May, divers typically enjoy encounters with giant mantas, schools of fish including the endemic black-striped Salema, white-tip reef sharks, Galápagos sharks and some hammerhead sharks.

- All meals are served on board and are scheduled around the dives, usually one dive before breakfast, one after breakfast, etc.
- Up to 4 dives can be done during the day.
- Night on board the cruise.
- Navigation back to the port of *Santa Cruz* in the afternoon.



DAY 12

ISLA SANTA CRUZ - DEPARTURE

AM

- Breakfast serve on board the cruise.
- You will have the opportunity to enjoy the city of *Puerto Ayora* one last time in the morning before taking the flight back to Quito in the early afternoon.
- Private ransfer to *Baltra* airport.

PM

- Flight back to Quito*.

*Not included, we can help you book international and domestic flights to Galápagos.

Depending on the return flight schedules from Quito to Montreal, a night in Quito may be required. This night at the hotel is not included in the package. Affordable hotels near the airport can be suggested.

INCLUSIONS AND EXCLUSIONS

INCLUSIONS

- 8 days/7 nights on the cruise (approx. 22-24 dives);
- 7 nights accommodation on the cruise;
- 4 nights accommodation on the Galápagos islands;
- 11 breakfasts, 7 lunches and 7 dinners (26 meals);
- All land transfers;
- All excursion mentioned in the itinerary;
- Excursions mentionnées dans l'itinéraire;
- French and English speaking guide;
- Certified Galápagos national park guide.

EXCLUSIONS

- All international flights;
- INGALA immigration card 20 USD and 10 USD airport tax*;
- 100 USD Galápagos National Park entry fee*;
- Other meals not mentioned in the itinerary;
- Other activities not mentioned in the itinerary;
- Nights accommodation in Quito**;
- Nitrox 150 USD* (optional, available on the cruise only);
- Travel and diving insurance (mandatory);
- Equipment rental;
- CFCTA contribution from clients;
- Gratuities.

*These fees are subject to change without notice.

** If needed, depending on flight schedules.



4117 rue Bertrand-Fabi
Sherbrooke, QC, J1L 2G3
819-564-2929
voyage@plongeeaquamundo.com

Quebec permit holder
No. 703493

**AQUA-
MUNDO**

AGENCE DE VOYAGE

